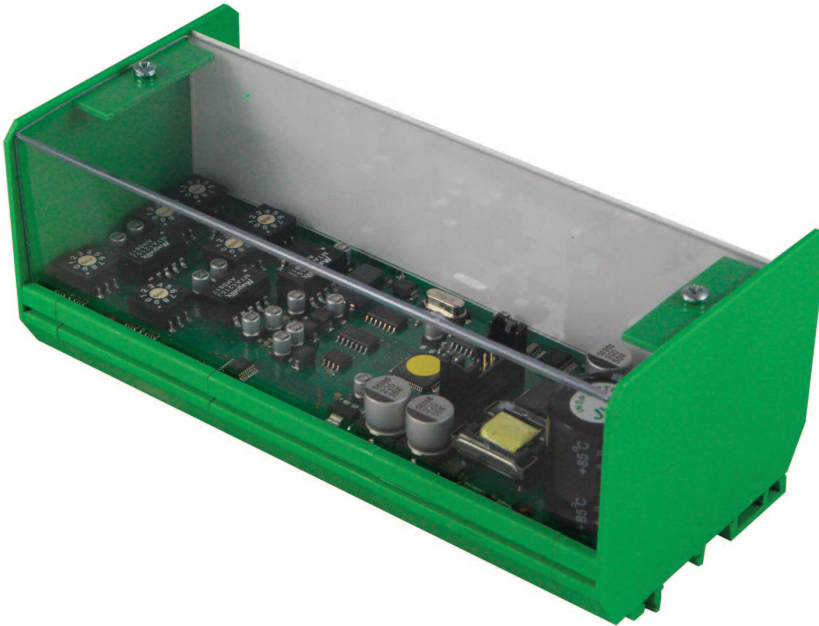


# DSE123

## ANALOGUE LOAD SHARE LINES INTERFACE



### KEY FEATURES

- Power On/Status LED
- Plug & socket connection for quick and easy set-up
- Simple configuration via multiple position switches
- Converts a single DSE5510, DSE7510 or DSE8610's MSC link to analogue load share lines.
- Compatible with Barber Colman, Deif, Delco and Woodward products that support analogue load share lines.

### KEY BENEFITS

- Expand existing systems with DSE modules without replacing existing control
- kW & kV Ar loadsharing between DSE & other manufacturers products.

### SPECIFICATION

#### DC SUPPLY

**CONTINUOUS VOLTAGE RATING**  
8 V to 35 V Continuous

#### CRANKING DROPOUTS

Able to survive 0 V for 50 mS, providing supply was at least 10 V before dropout and supply recovers to 5 V. This is achieved without the need for internal batteries. LEDs and backlight will not be maintained during cranking.

#### MAXIMUM OPERATING CURRENT

150 mA at 12 V, 80 mA at 24 V

#### MAXIMUM STANDBY CURRENT

150 mA at 12 V, 80 mA at 24 V

#### DIMENSIONS

##### OVERALL

161 mm x 78 mm x 76 mm  
6.3" x 3.1" x 3.0"

#### MOUNTING

DIN Rail

#### OPERATING TEMPERATURE RANGE

-30°C to +70°C

#### STORAGE TEMPERATURE RANGE

-40°C to +80°C

### RELATED MATERIALS

#### TITLE

DSE5510 Data Sheet  
DSE5510 Operators Manual  
DSE7510 Data Sheet  
DSE7510 Operators Manual  
DSE8610 Data Sheet  
DSE8610 Operators Manual

#### PART NO'S

055-039  
057-015  
055-065  
057-088  
055-083  
057-115

### DEEP SEA ELECTRONICS PLC UK

Highfield House, Hunmanby Industrial Estate, Hunmanby YO14 0PH  
**TELEPHONE** +44 (0) 1723 890099 **FACSIMILE** +44 (0) 1723 893303  
**EMAIL** sales@deepseapl.com **WEBSITE** www.deepseapl.com

### DEEP SEA ELECTRONICS INC USA

3230 Williams Avenue, Rockford, IL 61101-2668 USA  
**TELEPHONE** +1 (815) 316 8706 **FACSIMILE** +1 (815) 316 8708  
**EMAIL** sales@deepseausa.com **WEBSITE** www.deepseausa.com

# DSE123

## ANALOGUE LOAD SHARE LINES INTERFACE

The DSE123 converts the digital loadshare link between DSE products to the universal analogue load share lines. This process allows synchronising of control modules of a different manufacturer to share kW and kV Ar with the DSE5510, DSE7510 or DSE 8610.

By interfacing with manufacturers products, expanding an existing system can be accomplished with ease when utilising DSE synchronising and loadsharing products.

When DC power is applied to the DSE123, a status LED will illuminate. If the DSE123 cannot communicate with the DSE5510, DSE7510 or DSE8610, the LED will flash to indicate a communication malfunction.

### CONFIGURATION

The table shows how the DSE123 interface needs to be configured depending on the existing load share system.

TYPE	DSE123 SWITCH POSITION					
	kW SHARE SETTINGS			V Ar SHARE SETTINGS		
	A	B	C	D	E	F
BARBER COLMAN	6	4	2	0	1	1
DEIF*	0	1	8	0	1	8
SELCO	2	2	8	0	1	1
WOODWARD	6	8	1	0	1	1

### ENVIRONMENTAL TESTING STANDARDS

**ELECTRO MAGNETIC COMPATIBILITY**  
 BS EN 61000-6-2  
 EMC Generic Emission Standard for the Industrial Environment  
 BS EN 61000-6-4  
 EMC Generic Emission Standard for the Industrial Environment

**ELECTRICAL SAFETY**  
 BS EN 60950  
 Safety of Information Technology Equipment, including Electrical Business Equipment

**TEMPERATURE**  
 BS EN 60068-2-2  
 Test Ab to +70oC 60067-2-2 Hot  
 Test Ab to -30oC 60068-2-1 Cold

**VIBRATION**  
 BS EN 60068-2-6  
 Ten sweeps in each of three major axes  
 5Hz to 8Hz @ +/-7.5mm, 8Hz to 500Hz @ 2gn

**HUMIDITY**  
 BS 2011 part 2.1 60068-2-30  
 Test Cb Ob Cyclic  
 93% RH @ 40oC for 48 hours

**SHOCK**  
 BS EN 60068-2-27  
 Three shocks in each of three major axes  
 15gn in 11ms

## COMPREHENSIVE FEATURE LIST TO SUIT A WIDE VARIETY OF GEN-SET APPLICATIONS

